



# TKF TYPE

## 주요용도(Application)

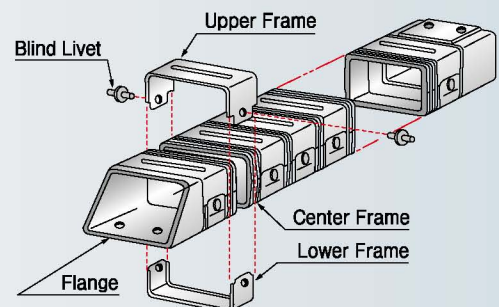
덕트형으로 이물질로부터 Cable, Hose 등의 보호를 필요로 하는 공작기계, 산업용로봇 등에 적합한 제품입니다.  
Application for CNC machines used in machining center, industrial robot and so forth.

## 특징(Features)

- 운동속도 : 90M/min 이하 사용가능
- TKF Type Cableveyor는 2.5m 이상은 사용 하지 말 것
- 재질 : Stainless Steel + 엔지니어링 플라스틱
- Stroke - application under 90m/min
- Don't using over 2.5m
- Material : Stainless steel + Engineering plastic
- Best protection from dust and residual substances
- Engineering plastic is used in inside structure to provide insulation.

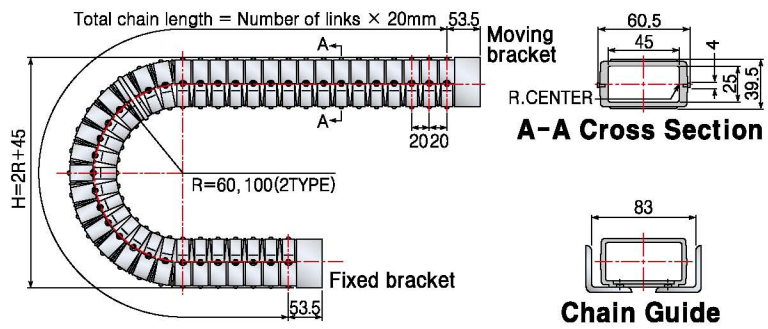


## 구조

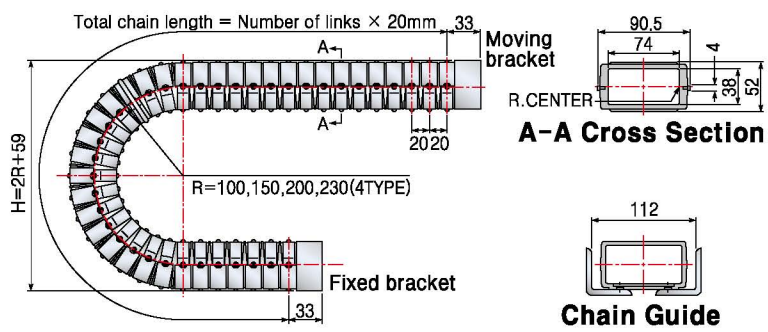


# TKF TYPE

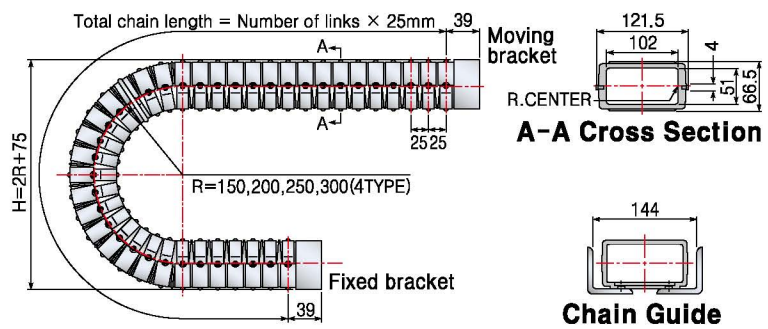
## TKF 055 TYPE



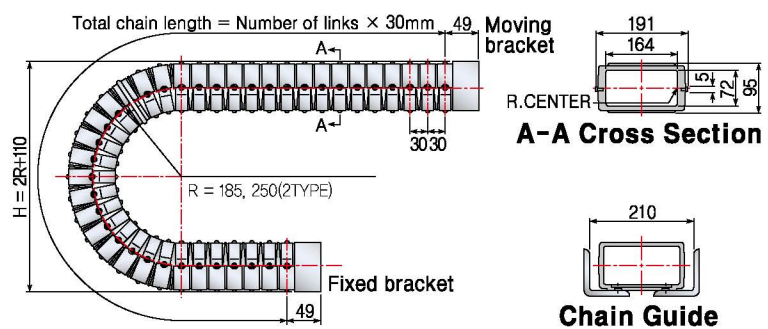
## TKF 085 TYPE



## TKF 115 TYPE



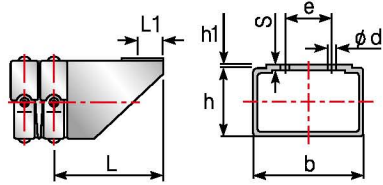
## TKF 175 TYPE



· Chain Length  $L = \frac{Ls}{2} + \pi R + 7A(7L/K)$

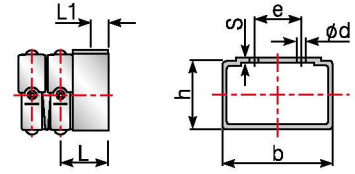
**TKF 고정브라켓**

ONLY "A" TYPE



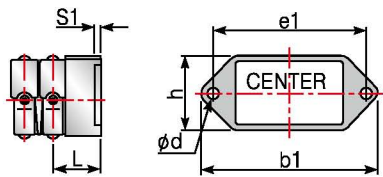
Chain Size	b	h	h <sub>1</sub>	d	e	L	L <sub>1</sub>	S
TKF 055	57	37	2	7	22	53	12.5	5.0
TKF 085	87	50	2.0	7	35	73	17	5.0
TKF 115	116	64	2.0	9	49	95	25	5.0
TKF 175	181	90	4	10	100	114	25	9.0

A TYPE



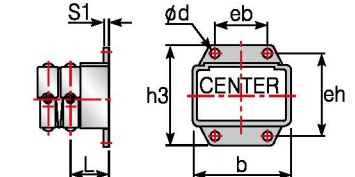
Chain Size	b	h	d	e	L	L <sub>1</sub>	S
TKF 055	57	37	7	22	29.5	8.5	6.5
TKF 085	82.5	48.5	7	50	35	10	5.5
TKF 115	116	64	9	65	45	10	6.0
TKF 175	181	88	10	100	55	14	8.0

B TYPE



Chain Size	b <sub>1</sub>	h	d	e <sub>1</sub>	L	S <sub>1</sub>
TKF 055	90	40	7	75	29.5	5.0
TKF 085	122	52	7	107	34.5	6.0
TKF 115	165	68	9	146	45	6.0
TKF 175	226	90	10	202	55	8.0

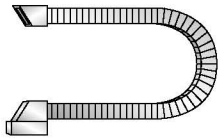
C TYPE



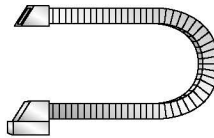
Chain Size	b	h <sub>3</sub>	d	eb	eh	L	S
TKF 055	57	70	7	18	55	29.5	5.0
TKF 085	86	85	7	45	70	34.5	6.0
TKF 115	116	110	9	60	90	45	5.5
TKF 175	185.5	138	10	95	110	55	9.0

**고정브라켓 연결방법 / 주문시 고정형태를 기록해 주세요**

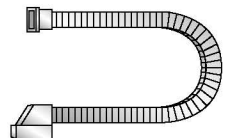
TYPE 1  
only A



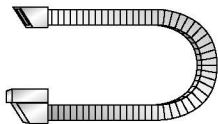
TYPE 2  
only A



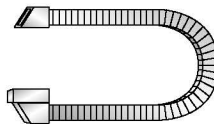
TYPE 3  
only A+B/C



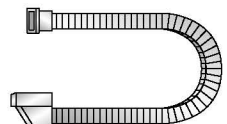
TYPE 4  
only A



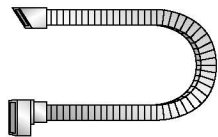
TYPE 5  
only A



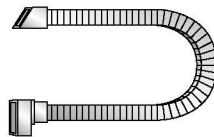
TYPE 6  
only A+B/C



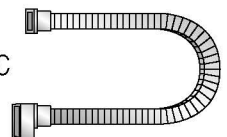
TYPE 7  
only A+B/C



TYPE 8  
only A+B/C



TYPE 9  
B/B, C/C, B/C



**Order Example [ 주문예 ]**

TKF 085 / Type ➤ R100 / Radius ➤ 2000L / Length ➤ T1 / Bracket ➤ 3Sets / Q'ty